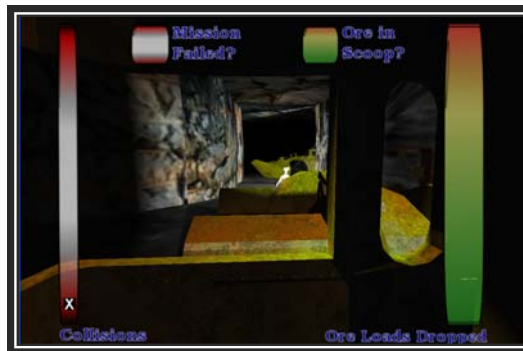
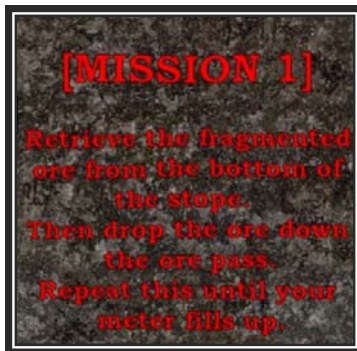


Visibility Project Fact Sheet

LOS “Products” to Aid in Knowledge Transfer

OBJECTIVE:

To develop training products to transfer knowledge about safety issues (including LOS) associated with the operation of mobile mining equipment.



Example screen captures from the computer LOS training module. Instructions regarding the task are given to the user (left). The user is required to safely drive an LHD vehicle down the mining drift with pedestrians and other mobile equipment present (center) in order to retrieve ore (right).

Background

Members of our research team have been conducting research into line of sight during the operation of mobile mining equipment since 1999. During this period a considerable amount of knowledge has been gained however there is a need to translate the research outcomes to industry. This project will focus on transferring this knowledge to workers within the mining industry, students who are currently in educational institutions (who will soon be working in the mining industry) and to manufacturers of mobile mining equipment. Therefore several “products” will be developed to transfer line of sight (LOS) knowledge.

Methods

The following products will be developed by the research team:

- interactive LOS training module that can be played on a computer (see figures above)
- LOS and mobile equipment safety meetings (power point presentations, leaders guides and participants manual)
- LOS analysis –how to guides
 - Light filament method
 - Laser scanner method
 - CLOSE method
- LOS and mobile equipment education modules which will be available on-line

Applications

These tools will serve to educate current workers and increase the profile of workplace safety amongst young workers. Small pilot tests and general usability evaluations will be conducted to ensure the products meet the learning needs of the stakeholder groups. If you are interested in helping to pilot test the products please contact the principal investigator (see below).

For More Information

Laurentian University
Ann Pegoraro
705-675-1151 ext. 2135

This research was carried out in partnership with the Mines and Aggregates Safety and Health Association via funding from the Ontario Workplace Safety and Insurance Board.